



## IPB-4612PVRS

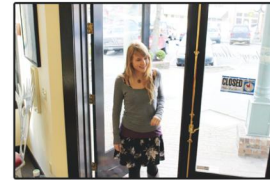
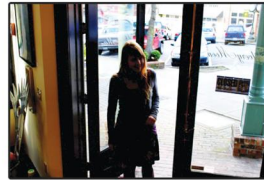
Colour 700/800 TVL 1/3" Sony Effio-P  
 DSP WDR Super High Res IR Bullet  
 Camera (40 mtrs range)



Conventional CCD



Effio-P Sensor



IPTEC PREMIERE  
**NOW WITH 3 YEARS WARRANTY**



### OVERVIEW

IPTEC employs the latest 4th Generation Effio-P DSP sensor (the best imaging Night and Day) in their range of WDR Cameras. Designed for applications where High Definition facial recognition is required under extreme dynamic lighting condition, strong light reflections and where intensity of illumination can vary excessively. WDR enables the capture & display of both bright areas and dark areas in the same frame, delivering a very high quality, high resolution and very accurate image. As each pixel acts as a camera, the picture taken by one pixel does not affect the picture quality captured by other pixels. Additionally, it is equipped with 42 high performance IR LED's allowing it to produce black and white images up to 40 metres in complete darkness. They are furnished with a 2.8 ~ 12mm IR varifocal auto iris lens offering a manually adjustable viewing angle of 28° ~ 136°.

### SPECIFICATION

CCD Sensor	1/3" Sony Effio-P DSP Sensor
Resolution	700 TVL (Colour) / 800 TVL (B&W)
Min. illumination	0 Lux LED On
Wide Dynamic Range	120dB (Effio-P)
Backlight	BLC / HLC / Off
Viewing Angle	28° ~ 136° (2.8 ~ 12mm)
Electronic Shutter	Also selectable via OSD
Selectable via OSD	AGC, Contrast, Sharpness, Motion, Privacy, Mirror, Camera ID, Shutter, WBL, BLC
IR Range (LED's)	40 metres (42 No. of LED's)
S/N Ratio	52dB
Iris Mode	Auto Iris Varifocal
Mounting	Wall / Ceiling
IP Rating	IP68
Dimension	61.5(W) x 61.5(H) x 102(D) mm
Weight	900 g
Power Source	DC12V

MADE IN KOREA